

Medical Masks Sewing Instructions

Hi Ladies,

We have been asked by our local Doctors to make masks to go over their N95 masks.

Karen has modified the pattern to meet their needs and will distribute the pattern through Facebook and through e-mail. Please remember to increase the size to 9" by 14" and to put bias binding on the top and bottom, and extend the binding by 12 inches on each side to form ties.

Please do not use elastic.

You will notice that we are requested to make single ply and double ply masks. To ensure that we don't end up with all the same size I am asking you to make equal amounts of each.

Connie and I have come up with a collection plan – when you have completed some masks please call Connie 250-303-1217 or myself 250-392-3473

We will put a container outside and ask you to drop off your masks there. We will then deliver them to the correct spot.

This is a very difficult time for all of us – I am so proud to belong to a group of women who will rise to the challenge and use our skills to help keep our community safe.

Rilla



<https://thestitchingscientist.com/2020/03/how-to-sew-a-face-mask.html>

KAREN HAS MODIFIED THIS PATTERN TO MEET THE NEEDS OF OUR DOCTORS – PLEASE READ HER E-MAIL BEFORE CUTTING FABRIC.

NO ELASTIC PLEASE – IT WILL NOT HOLD UP TO THE WASHING

Hi, everyone,

Wow! As usual the step-up-to-the-plate mentality is shining through these uncertain days! You are all fantastic:)

I've been consulting with the doctors, and Jeannie Gerard, the wife of one of the docs, as well as Rilla. We need a standardized pattern for a mask that can be used to go over top of an N95 mask. The doctors are asking for 200 masks in total so far, both single ply and double ply, so 100 of each. If you can afford the time and fabric, and we accumulate a few more, that won't hurt. 100% cotton quilting fabric is good, and Tee shirt cotton (100% or 80/20 cotton poly) is also effective (no laminated plastic wording or images if using permanent-shirts please). Also No batik, please, as it is too finely woven for breathing through.

The following pattern in this email must be increased in initial cut size to **9 by 14** instead of 8 by 14. And please add ties, not elastic, for securing to the head. Use a strip of bias to finish top and bottom and extend out 12 inches on each side.

If the mask is 1ply, mark a "1" on the top left side; if it is 2 ply mark a "2" on the top left side IN BLACK FELT PEN so the doctors know what they are grabbing, please and thanks.

No request for any sort of pliable metal for around the nose at this time, but if you feel like experimenting with something that won't poke out from the mask, feel free. It's the size and shape of the masks that need to be all the same.

I will keep everyone posted on any other needs. Thank you so much for chipping in?

Karen Irvine



9"x14"



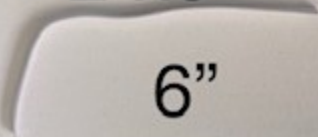
2"x6"



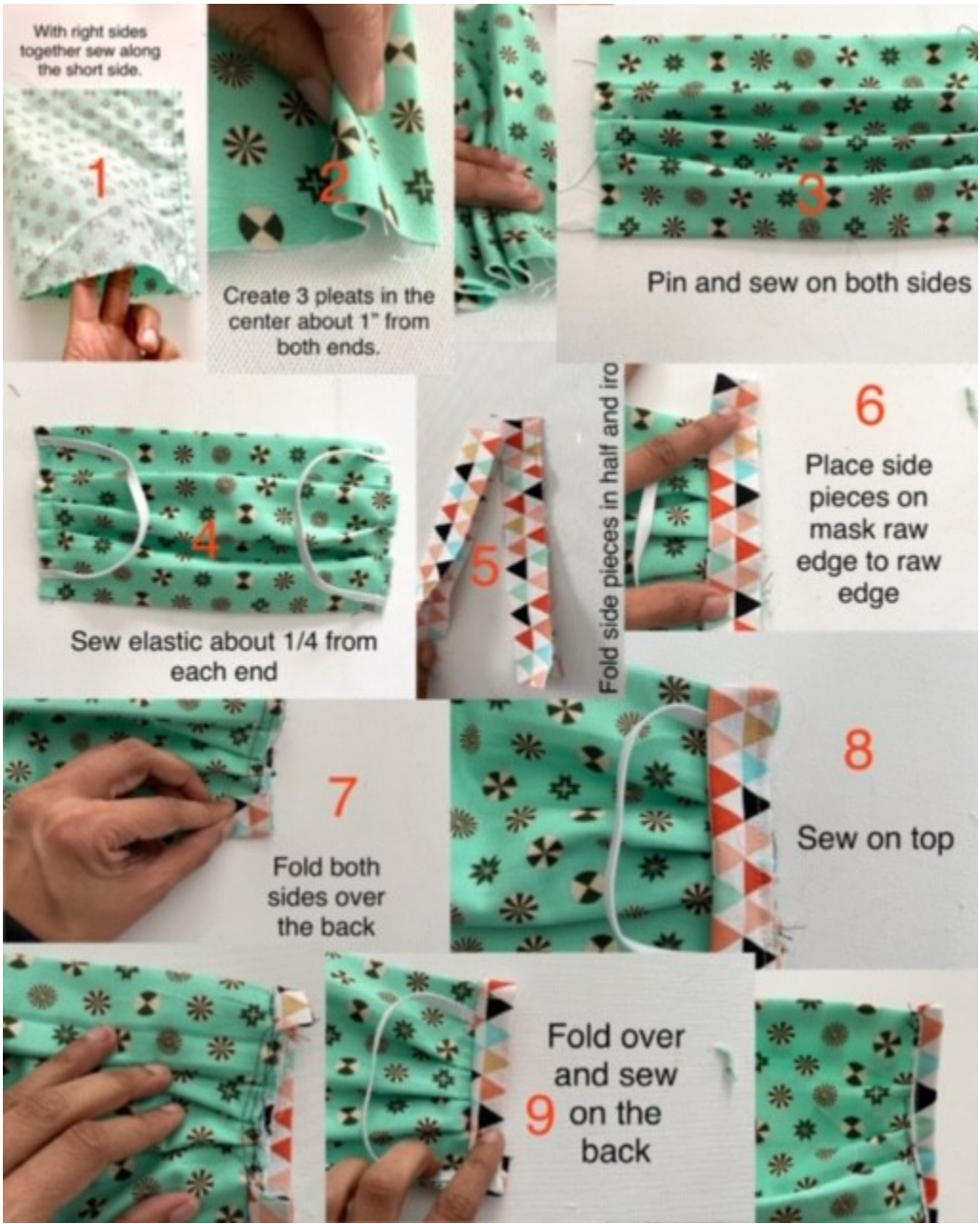
2"x6"



6"



6"



How to Sew a Face Mask




The Stitching Scientist
FREE SEWING PATTERNS