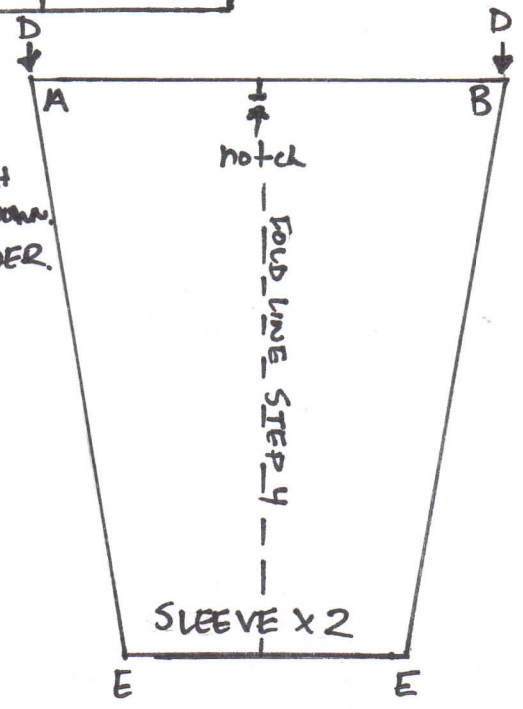
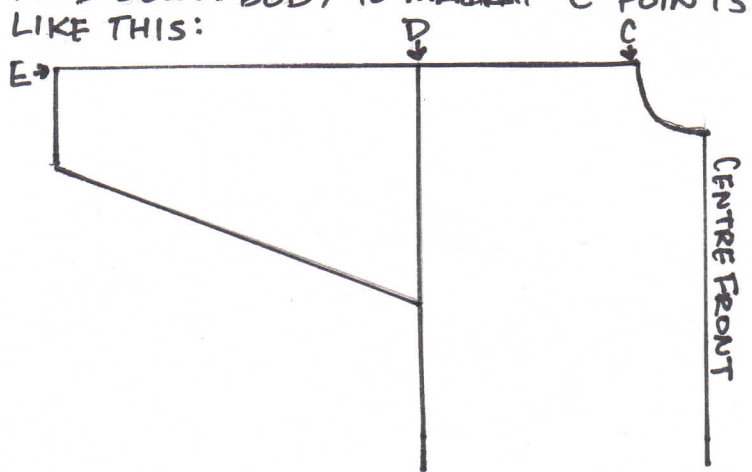


1. FINISH BOTH BACK EDGES AND HEM WITH A  $\frac{1}{4}$ " ROLLED HEM. DO THE SAME AT NECKLINE.
2. SEW BOTH SLEEVES FROM A  $\rightarrow$  B ONTO BODY (MATCH NOTCHES). EITHER SERGE RAW EDGES OR TOPSTITCH DOWN.
3. ATTACH ELASTIC TO SLEEVE HEM, FOLDING  $\frac{1}{4}$ "- $\frac{1}{2}$ " UNDER.
4. FOLD GOWN BODY TO MATCH "C" POINTS TO LOOK LIKE THIS:



5. SEW C  $\rightarrow$  E WITH  $\frac{1}{2}$ " SA. FINISH SEAM EITHER BY SERGING, ROLLING (LIKE A PANT HEM) OR TOPSTITCHING DOWN.
6. ATTACH WAIST AND NECK TIES.